

ARCHITECT / GENERAL CONTRACTOR NOTES

- 1. MINIMUM DIMENSIONS PROVIDE FOR CLEARANCE FROM ALL ADJACENT CONSTRUCTION/FIXTURES FOR ADJUSTMENT, OPERATION, AND SAFETY.
- 2. GENERAL CONTRACTOR SHALL BE RESPONSIBLE FOR ALL STRUCTURAL SUPPORT, ADJOINING CONSTRUCTION AND TRIM.
- 3. WALL CONSTRUCTION AT JAMBS MUST BE ADEQUATE FOR SECURING JAMBS, AND WITHSTANDING FORCE EXERTED BY THE EXPANDABLE PANEL.
- 4. AFS INDICATES ADJUSTABLE FIXED SEALS.
T INDICATES OPERABLE PANEL ACCESS HOLE.
▼ INDICATES BOTTOM SEAL OPERATOR HANDLE.
- 5. HINGE POINTS ARE SHOWN FOR DIAGRAMMATIC PURPOSES ONLY.

PANEL LAYOUT
OP-01

CLOSURE METHOD	EXPANDABLE - 6"
TRAIL JAMB HEIGHT	9'-2"
PANEL FABRICATION HEIGHT	9'-2"
LEAD JAMB HEIGHT	9'-2"
SUSPENSION SYSTEM	#17 HD BKT (4.5 OMT G)
BOTTOM SEALS	2" (51MM) AUTOMATIC
PANEL ACOUSTICAL RATING	50 STC
HANGING WEIGHT	8 LBS./SQ.FT.
PANEL SKIN/FACING	NON STEEL
HINGE/TRIM COLOR	TO BE ADVISED/TO BE ADVISED
PANEL FINISH	VINYL
PANEL FINISH COLOR	TO BE ADVISED

ACOUSTI-SEAL
932



JOB NAME: CORDOVA HIGH SCHOOL MARK HOLLEY

4-13-21 MB

LOCATION: MEMPHIS, TN

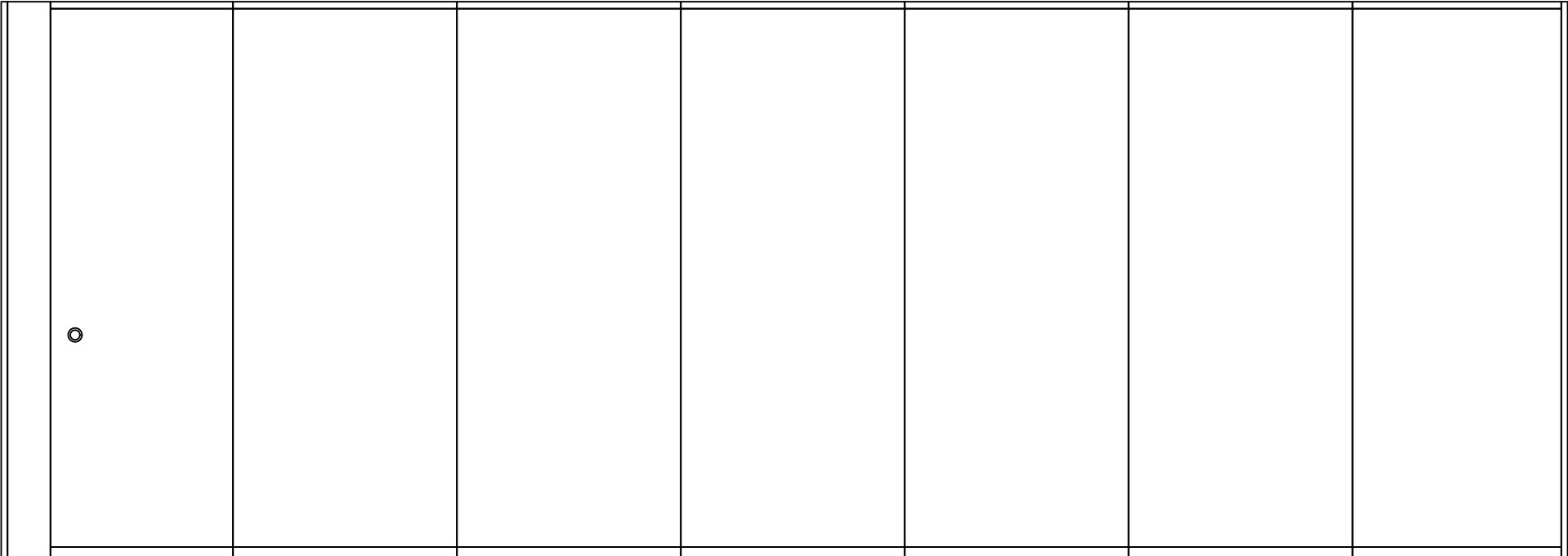
ARCHITECT: .

CONTRACTOR: ..

DISTRIBUTOR: RAVENSBERG INCORPORATED

DRAWING NO. A16132-01-D1 ORDER NO: SHEET: 1 OF 5

DATE	REV	ISSUED FOR	DRN.
07/26/21	0	APPROVAL	MPM
	1		
	2		
	3		
	4		
	5		
	6		
	7		
	8		



1

2

3

4

5


6

7

ELEVATION LEFT
OP-01

CLOSURE METHOD	EXPANDABLE - 6"
TRAIL JAMB HEIGHT	9'-2"
PANEL FABRICATION HEIGHT	9'-2"
LEAD JAMB HEIGHT	9'-2"
SUSPENSION SYSTEM	#17 HD BKT (4.5 OMT G)
BOTTOM SEALS	2" (51MM) AUTOMATIC
PANEL ACOUSTICAL RATING	50 STC
HANGING WEIGHT	8 LBS./SQ.FT.
PANEL SKIN/FACING	NON STEEL
HINGE/TRIM COLOR	TO BE ADVISED/TO BE ADVISED
PANEL FINISH	VINYL
PANEL FINISH COLOR	TO BE ADVISED

ACOUSTI-SEAL
932



MODERNFOLD®

JOB NAME:CORDOVA HIGH SCHOOL MARK HOLLEY

4-13-21 MB

DATE	REV	ISSUED FOR	DRN.
07/26/21	0	APPROVAL	MPM
	1		
	2		
	3		
	4		
	5		
	6		
	7		
	8		

LOCATION:MEMPHIS, TN

ARCHITECT:.

CONTRACTOR:..

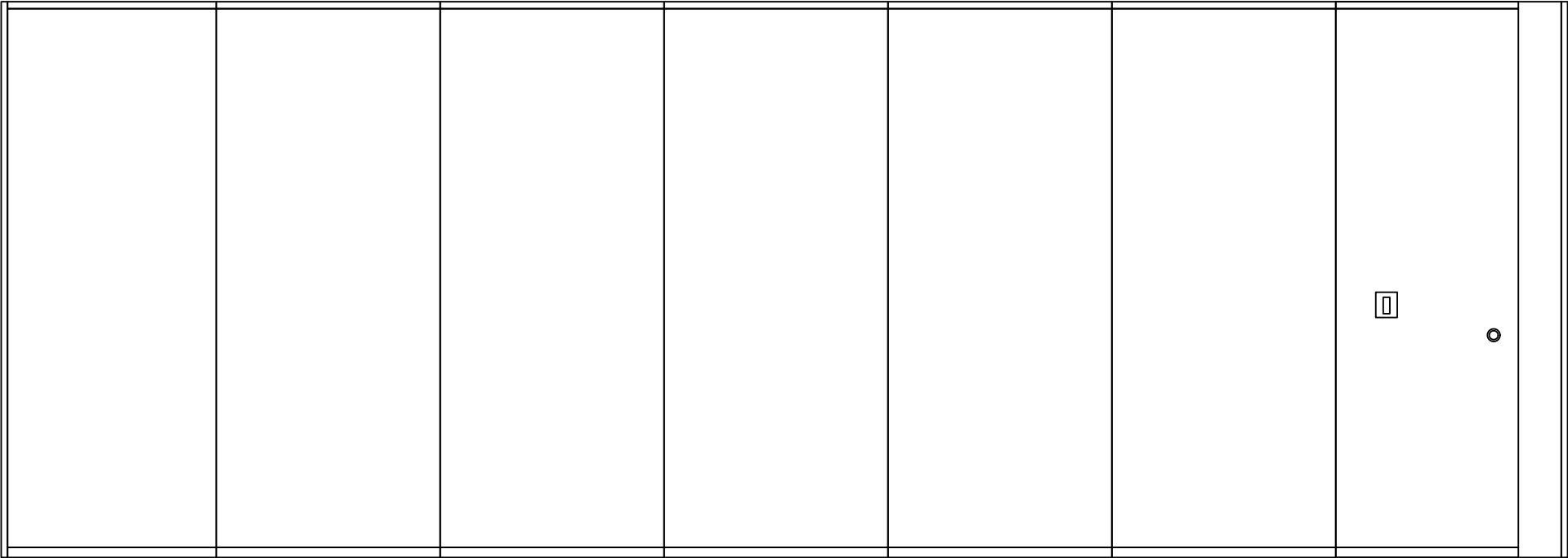
DISTRIBUTOR:RAVENSBERG INCORPORATED

DRAWING NO. A16132-01-D2

ORDER NO:

SHEET: 2 OF 5

LEAD



7

6

5

4

3

2

1

ELEVATION RIGHT
OP-01

CLOSURE METHOD	EXPANDABLE - 6"
TRAIL JAMB HEIGHT	9'-2"
PANEL FABRICATION HEIGHT	9'-2"
LEAD JAMB HEIGHT	9'-2"
SUSPENSION SYSTEM	#17 HD BKT (4.5 OMT G)
BOTTOM SEALS	2" (51MM) AUTOMATIC
PANEL ACOUSTICAL RATING	50 STC
HANGING WEIGHT	8 LBS./SQ.FT.
PANEL SKIN/FACING	NON STEEL
HINGE/TRIM COLOR	TO BE ADVISED/TO BE ADVISED
PANEL FINISH	VINYL
PANEL FINISH COLOR	TO BE ADVISED

ACOUSTI-SEAL
932



JOB NAME: CORDOVA HIGH SCHOOL MARK HOLLEY

4-13-21 MB

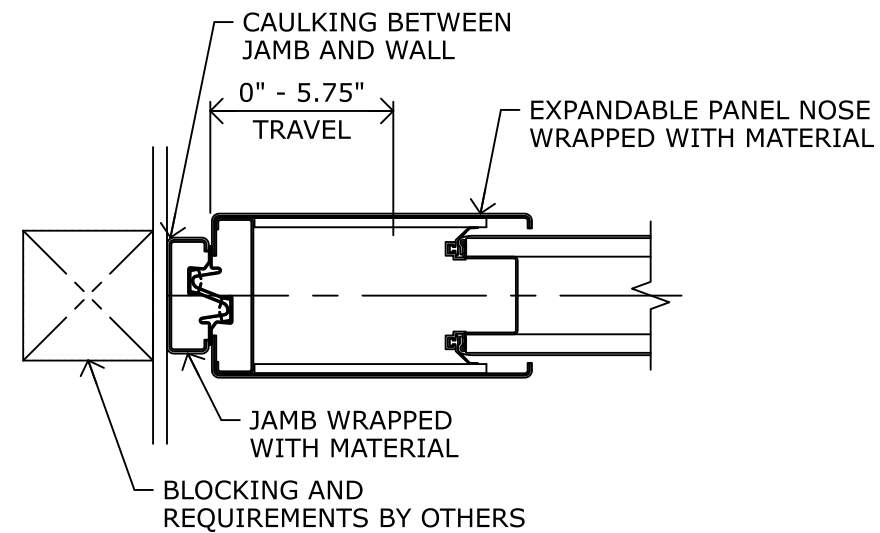
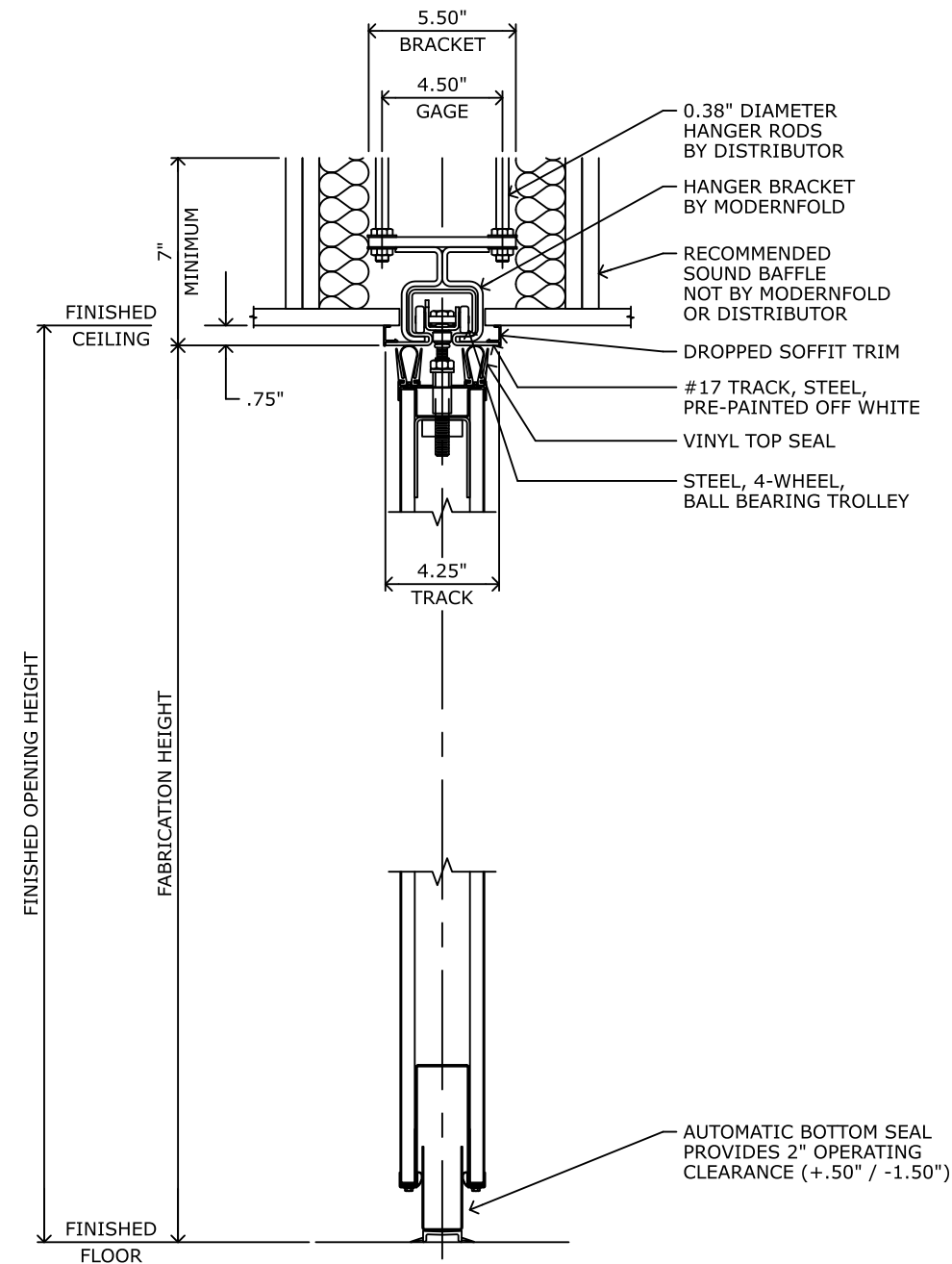
LOCATION: MEMPHIS, TN

ARCHITECT: .

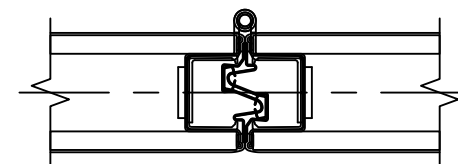
CONTRACTOR: ..

DISTRIBUTOR: RAVENSBERG INCORPORATED

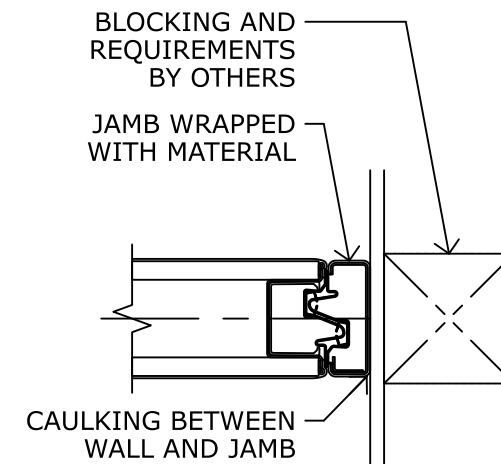
DRAWING NO. A16132-01-D3 ORDER NO: SHEET: 3 OF 5



EXPANDABLE PANEL WITH JAMB



HINGED PANEL JOINT



JAMB

ARCHITECT / GENERAL CONTRACTOR NOTES

1. REFER TO MODERNFOLD ASCE7 DESIGN GUIDE FOR SEISMIC BRACING REQUIREMENTS

**DETAIL SHEET
OP-01**

CLOSURE METHOD	EXPANDABLE - 6"
TRAIL JAMB HEIGHT	9'-2"
PANEL FABRICATION HEIGHT	9'-2"
LEAD JAMB HEIGHT	9'-2"
SUSPENSION SYSTEM	#17 HD BKT (4.5 OMT G)
BOTTOM SEALS	2" (51MM) AUTOMATIC
PANEL ACOUSTICAL RATING	50 STC
HANGING WEIGHT	8 LBS./SQ.FT.
PANEL SKIN/FACING	NON STEEL
HINGE/TRIM COLOR	TO BE ADVISED/TO BE ADVISED
PANEL FINISH	VINYL
PANEL FINISH COLOR	TO BE ADVISED



DATE	REV	ISSUED FOR	DRN.
07/26/21	0	APPROVAL	MPM
	1		
	2		
	3		
	4		
	5		
	6		
	7		
	8		

**ACOUSTI-SEAL
932**

JOB NAME: CORDOVA HIGH SCHOOL MARK HOLLEY

4-13-21 MB

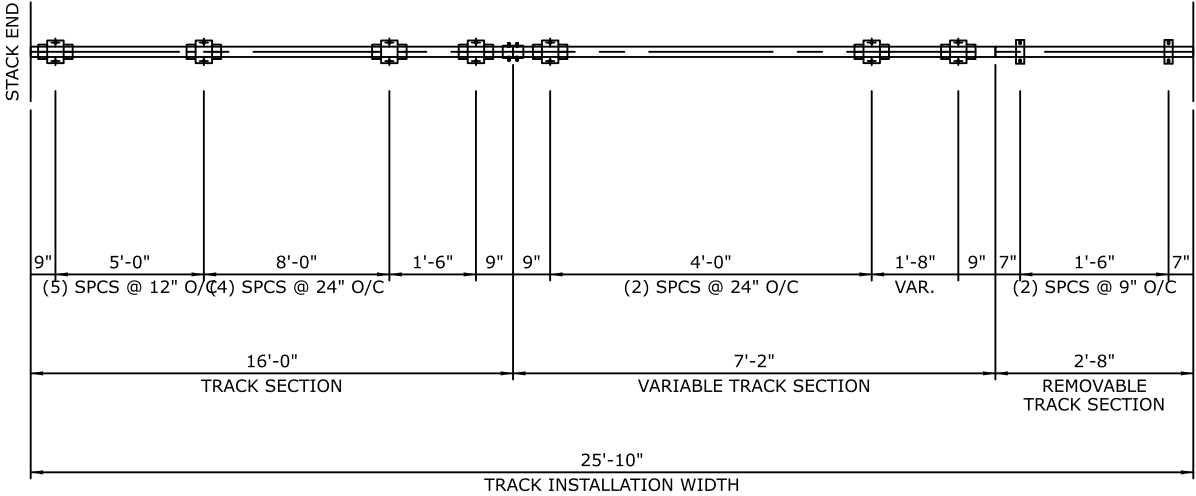
LOCATION: MEMPHIS, TN

ARCHITECT: .

CONTRACTOR: ..

DISTRIBUTOR: RAVENSBERG INCORPORATED

DRAWING NO. A16132-01-D4 ORDER NO: SHEET: 4 OF 5




- NOTES:**
- 1. PUNCH OR DRILL .44" DIA. HOLES, 2.25" EACH SIDE OF CENTERLINE, 4.50" GAGE, AT ALL LOCATIONS, AS NOTED.
 - 2. OMIT RODS AND NUTS

TRACK LAYOUT
OP-01

ACOUSTI-SEAL
932

CLOSURE METHOD	EXPANDABLE - 6"
TRAIL JAMB HEIGHT	9'-2"
PANEL FABRICATION HEIGHT	9'-2"
LEAD JAMB HEIGHT	9'-2"
SUSPENSION SYSTEM	#17 HD BKT (4.5 OMT G)
BOTTOM SEALS	2" (51MM) AUTOMATIC
PANEL ACOUSTICAL RATING	50 STC
HANGING WEIGHT	8 LBS./SQ.FT.
PANEL SKIN/FACING	NON STEEL
HINGE/TRIM COLOR	TO BE ADVISED/TO BE ADVISED
PANEL FINISH	VINYL
PANEL FINISH COLOR	TO BE ADVISED

 MODERNFOLD®

JOB NAME:CORDOVA HIGH SCHOOL MARK HOLLEY

4-13-21 MB

DATE	REV	ISSUED FOR	DRN.	LOCATION:MEMPHIS, TN		
07/26/21	0	APPROVAL	MPM			
	1			ARCHITECT:.		
	2					
	3			CONTRACTOR:..		
	4					
	5			DISTRIBUTOR:RAVENSBERG INCORPORATED		
	6					
	7			DRAWING NO. A16132-01-D5	ORDER NO:	SHEET: 5 OF 5
	8					